

# NEW SINGLE-FAMILY HOMES



D.R. Horton is equal housing opportunity builder. Home and community information, including pricing, included features, terms, availability and amenities, are subject to change and prior sale at any time without notice or obligation. Pictures, photographs, features, colors and sizes are approximate for illustration purposes only and will vary from the homes as built. Florida Certified General Contractor #CGC059394

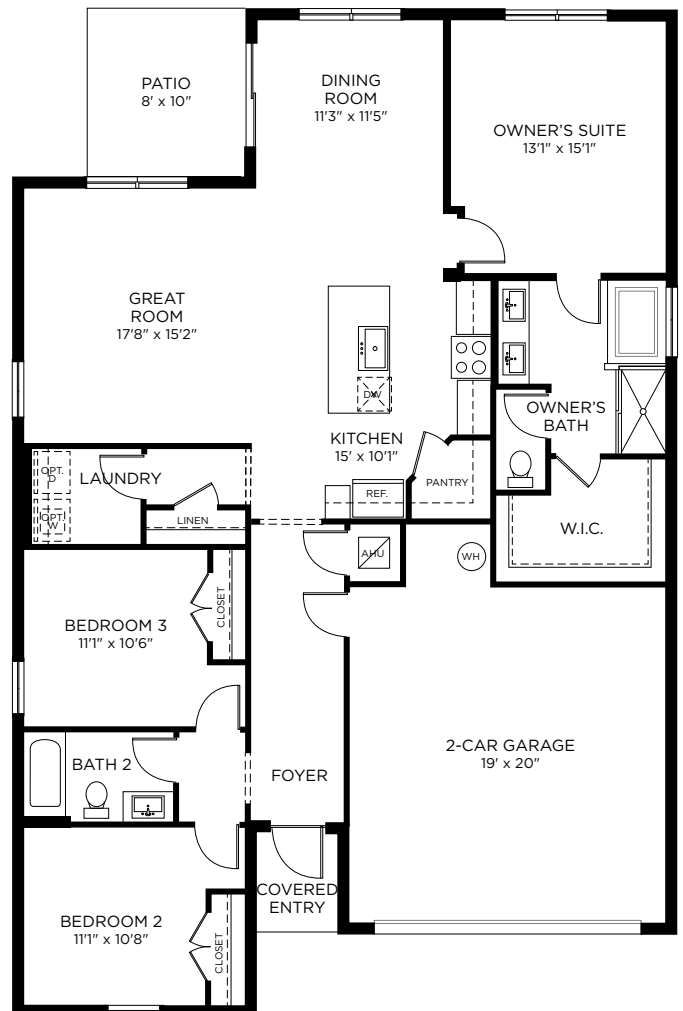
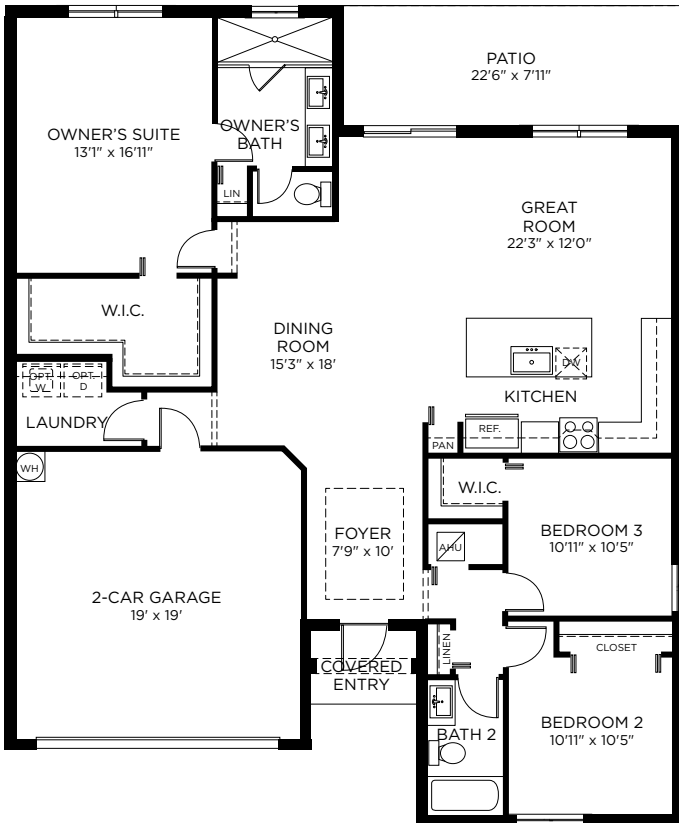
# ARCOLA

3 Bedrooms, 2 Baths  
2-Car Garage | 1,666 A/C Sq. Ft.



# BENITO

3 Bedrooms, 2 Baths  
2-Car Garage | 1,686 A/C Sq. Ft.



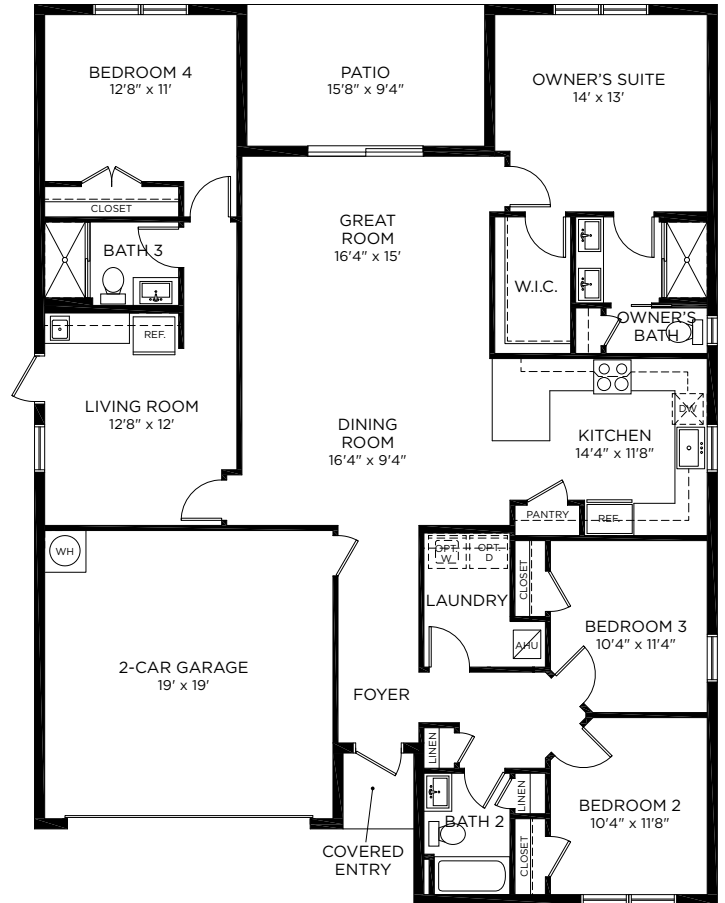
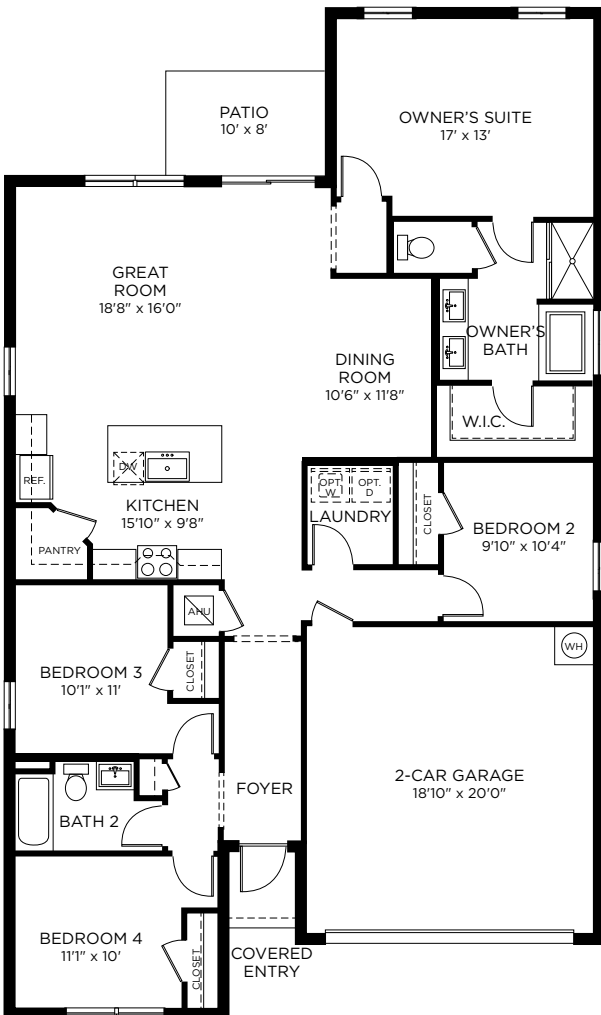
# DAVENPORT

4 Bedrooms, 2 Baths  
2-Car Garage | 1,815 A/C Sq. Ft.



# ELLINGTON

4 Bedrooms, 3 Baths  
2-Car Garage | 1,985 A/C Sq. Ft.



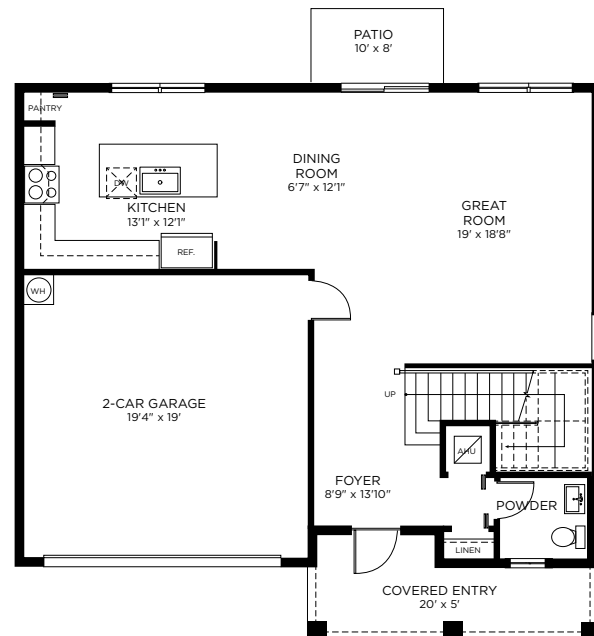
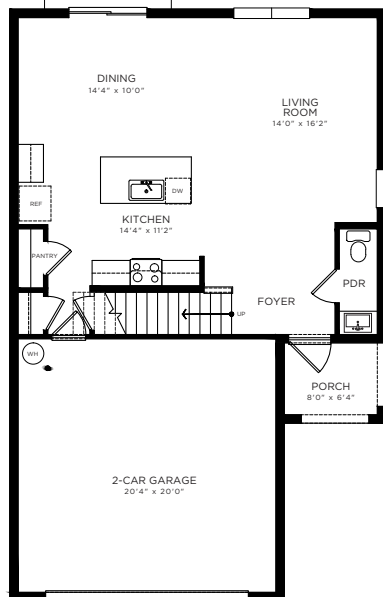
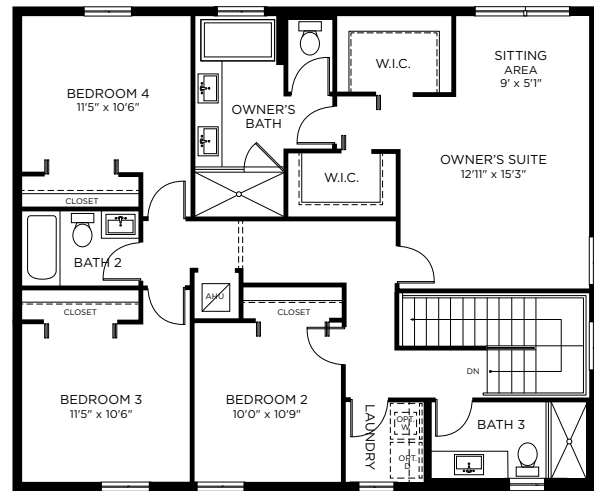
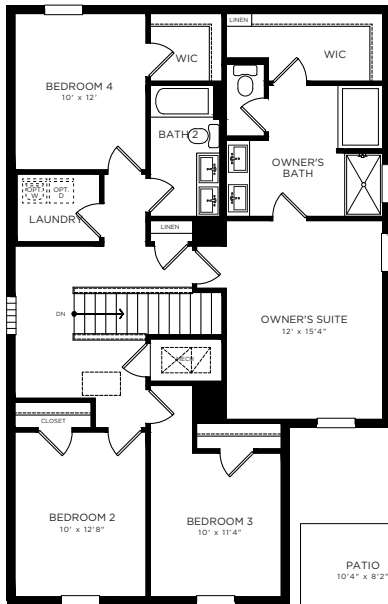
# AISLE

4 Bedrooms, 2.5 Baths  
2-Car Garage | 2,046 A/C Sq. Ft.



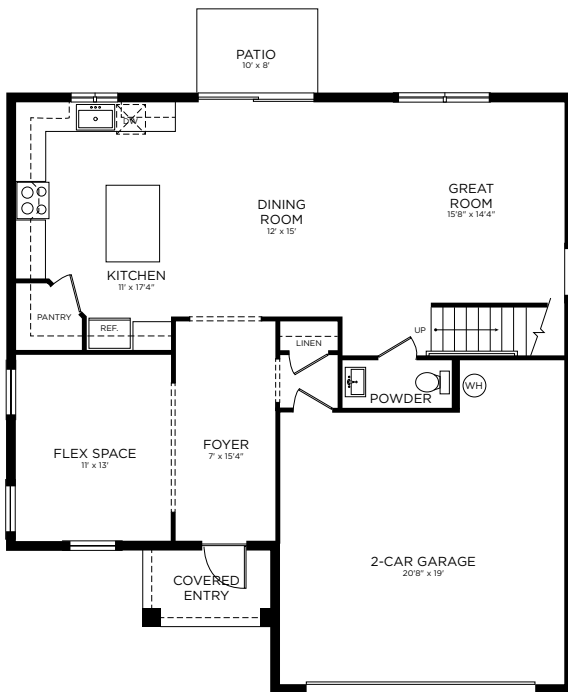
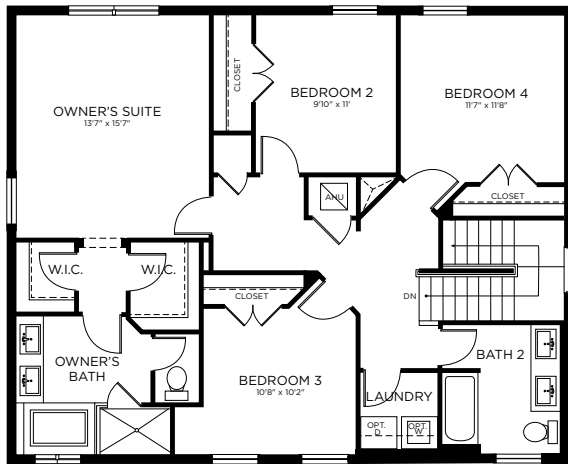
# CORAL II

4 Bedrooms, 3.5 Baths  
2-Car Garage | 2,145 A/C Sq. Ft.



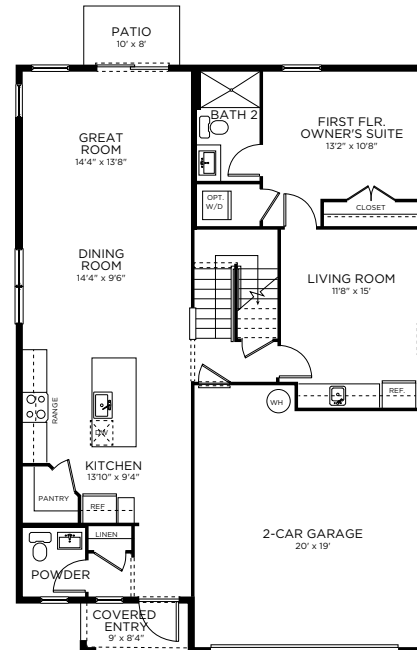
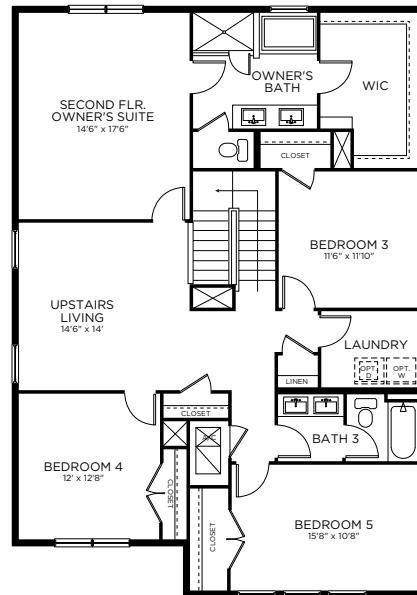
# FORESTER

4 Bedrooms, 2.5 Baths, Flex Space  
2-Car Garage | 2,262 A/C Sq. Ft.



# GRANDCOURT

5 Bedrooms, 3.5 Baths, Upstairs  
Living, 2-Car Garage | 2,854 A/C Sq. Ft



# Rosecrest | Included Features

## Architectural Artistry

- Architecturally designed exterior elevations with each floor plan
- Reinforced concrete monolithic foundation slab
- Masonry exterior walls on first and second floors
- Professionally engineered roof and floor trusses with hurricane clips and bracing
- Durable metal garage door
- Therma Tru® embossed insulated fiberglass 8' front door
- Fully sodded homesites with professionally designed landscaping
- Hunter® automatic irrigation system
- IKO® dimensional roof shingles with 30 year manufacturers warranty
- Paver driveways, entry walkways, and patios
- Gutters in front area of driveway and entry walkway
- Hurricane storm panels
- Exterior hose bib connection
- Exterior weather proof outlets (G.F.I.)

## Heart of the Home

- Knockdown textured finish on walls and ceilings
- Jeld-Wen® 2-panel interior doors
- Kwikset® Satin nickel keyed entry handle set
- Kwikset® Satin nickel interior door levers throughout
- Vinyl-coated ventilated shelving in all closets
- Daltile® 18" x 18" ceramic tile flooring in all 1st floor living areas
- Mohawk® luxurious wall-to-wall carpeting (installed over dense padding)
- Sherwin Williams® bright white interior paint
- Square baseboards throughout

## A Gourmet's Delight

- Whirlpool® Stainless Steel Appliances:
  - 24 cu ft. side by side refrigerator with ice maker
  - Glass top range with microwave above
  - Built-in dishwasher
- Quality crafted custom designed wood cabinets with 36" uppers
- Sterling® single-bowl stainless steel sink
- Moen® single lever faucet

## Thoughtful Details

- Uponor® PEX plumbing water lines
- Minimum 50 gallon insulated water heater (per plan)
- Interior washer/dryer hookup
- Carrier® energy efficient minimum 15 SEER central A/C and heating system
- Cooper® switches and outlets throughout
- Minimum 150-amp electrical panel with circuit breakers

## Bathroom Conveniences

- Gerber® elongated commodes throughout
- Gerber® pedestal sink in powder room (per plan)
- Moen® bathroom faucets throughout
- Sterling® soaking tub in owner's suite (per plan)
- All baths with adult height custom designed wood cabinets
- Full vanity mirrors in all baths
- Daltile® 12" x 12" ceramic tile floors in all baths
- Daltile® 12" x 12" ceramic tile walls in owner's bath
- Frame glass shower enclosure (per plan)
- Cultured marble vanity countertops
- Air King® exhaust fans in all bathrooms

## Technology Standard Features

- Square D® surge protection on all major appliances
- R-30 blown insulation above all air-conditioned living space
- R-11 BATT insulation between interior wall and garage wall
- R-4.1 insulated exterior masonry walls
- Pre-wired for ceiling fans with switches in all bedrooms and great room
- High speed structured wiring for 4-line phone, video and computer Includes CAT-5 data lines and RG-6 quad shield coaxial cable (per plan)
- Kidde® electrical smoke detectors with battery back-up
- Kidde® carbon monoxide detector

## Home Is® Connected

- Qolysys IQ Panel II 7" HD Touchscreen with built-in 5MP camera
- Skybell® Trim Plus WiFi video doorbell
- Echo Dot™ speaker with Alexa
- Z Wave™ Thermostat
- Z Wave™ Light Switch
- Z Wave™ Door Lock
- WiFi enabled garage door opener with two transmitters
- Security System with 1 motion detector and 3 door contacts

## D.R. Horton's Personal Touch

- Personalized New Homeowner Orientation
- D.R. Horton 1-Year Warranty
- 10-Year RWC™ warranty to protect your investment
- 10-Year Carrier® limited warranty
- 3rd party home inspections

D.R. Horton is equal housing opportunity builder. Included features subject to change without prior notice or obligation, as a result, please consult with one of our sales representatives for the latest community information. This map is a schematic for exhibition purposes only and does not represent the exact location or configuration of site features, lot lines, easements, amenities, units, buildings or details shown thereon. All homesite sizes are approximate and may vary. All information on this map, including availability and delivery dates is subject to change without notice or obligation. Florida Certified General Contractor #CGC059394

